



ROME FOUNDATION CELEBRATES 30 YEARS OF LEADERSHIP WITH DR. DROSSMAN AT DDW 2019

After nearly three decades of leadership that birthed what is now known as the Rome Foundation, the board and staff of the Rome Foundation celebrated the work of Dr. Douglas Drossman at a reception on Digestive Disease Week (DDW) in May, 2019. Hundreds of colleagues, friends and family surprised Dr. Drossman with a farewell reception as he transitioned into a new role of President Emeritus and Chief of Operations, and Dr. Jan Tack assumes the role of President of the Foundation. Friends and colleagues from throughout Dr. Drossman's career spoke about his impact on the field of GI and the personality traits and humor that has allowed him to create educational programs, initiatives and leading research in the disorders of gut brain interactions. View the reception at: <https://romedross.video/2X0VU06>

The Rome Foundation continues to have a major role at the AGA's Digestive Disease Week with various lectures given by Rome Foundation Board members and committee members, as well as the AGA/Rome Foundation Lecture which takes place each year.

FROM THE DESK OF THE PRESIDENT

Dear Rome Foundation Members, Friends and Sponsors,

The transition of the presidency of the Rome Foundation from Douglas Drossman, who took on the function of Chief of Operations, to myself is a major challenge but also offers many opportunities. The details of the new organizational chart are outlined in the COO Report by Douglas Drossman. The fact that the function is taken over by a European, with a gastrointestinal motility background and a major interest in upper as well as lower gastrointestinal tract disorders confirms the truly global and broad aspirations of the Rome Foundation. Our ambition is to increase our activities and scope, which is necessary to fulfill our mission against a rapidly evolving scientific, clinical and societal view on patients with Functional Gastrointestinal Disorders, as we used to label them.

The mission of the Rome Foundation is to improve the lives of people with Disorders of Gut-Brain Interaction. The latter term replaces the older terminology of with Functional Gastrointestinal Disorders. To improve the life of these patients, the Rome Foundation wants to promote global recognition and legitimization of these disorders, to advance the scientific understanding of their pathophysiology, to optimize clinical management for these patients and to develop and provide educational resources to accomplish these goals. Disorders of Gut-Brain Interaction are defined as a group of disorders classified by gastrointestinal symptoms related to any combination of: 1) Motility disturbance, 2) Visceral hypersensitivity, 3) Altered mucosal and immune function, 4) Altered gut microbiota, and 5) Altered CNS processing.

It has become increasingly clear that the pathogenesis of Disorders of Gut-Brain Interaction (DGBIs) is multifactorial, and scientific knowledge is rapidly expanding on several of these aspects, including the role of nutrients, gut microbiota, advanced analysis of gastrointestinal motor function and central processing of incoming signals from the gut. Incorporating this rapidly

expanding knowledge into a global view on Disorders of Gut-Brain Interaction, to understand their pathogenesis and optimize their diagnostic and management approach in an individualized fashion requires a large, focused and multinational coordinated research effort.

The Rome Foundation Research Institute (RFRI) was started to address several of these questions, take advantage of the legacy of the Rome Foundation in developing and using questionnaires on DGBIs and their impact, on interacting with leading clinicians and investigators in this field and on knowledge on the relevant unanswered scientific and clinical management questions for these disorders. The RFRI is led by Magnus Simren, Douglas Drossman and Jan Tack, members of its executive committee. Being initiated in 2018, the RFRI is close to finalizing the DOMINO trial, a large IBS combined biomarker, health resource utilization and randomized treatment trial in 470 primary care patients. The RFRI is also conducting a multinational study on the prevalence, characteristics and impact of bloating in the general population, and is finalizing the design of the ROBOT study, a prospective multi-national biomarker identification project in DGBIs in the broad sense which will kick off in early 2020. These successes pave the way for the RFRI to become the leading resource for organizing and conducting research in this field, and an invaluable partner for clinicians, researchers and industry interested in DGBIs.

The upcoming report of the Rome IV global epidemiology study will be the best early illustration of the capabilities of the Rome Foundation as a research organization. This initiative, led by Rome Board member Ami Sperber together with Oli Palsson, Research Manager for the RFRI, and Shrikant Bangdiwala, Chief statistician for the RFRI, is a genuinely world-wide survey. It uses the Rome IV diagnostic questionnaire which has been translated into multiple languages, and is cross-culturally and linguistically validated. The questionnaire has been administered to more than 70000 subjects, reflecting the general population from 33 countries around the globe. The lead publication on this extremely rich database is expected for the first half of 2020, and will provide landmark data on the global prevalence of all DGBIs, their impact and association with several demographic, lifestyle and psychosocial variables. This study, as well as the ongoing RFRI studies will substantially increase our knowledge and understanding of the DGBIs, thereby

generating new pathophysiological hypotheses which will drive new research.

Rome Foundation Working teams provide a state-of-the-art summary report on topics related to DGBIs pathophysiology, symptom pattern and impact and management. Working team reports were published in 2019 in Gastroenterology on Post-infection DGBIs, led by Giovanni Barbara, and in Gut on the Role of Brain Imaging in DGBIs, led by Emeran Mayer. A number of additional working teams on various topics are planned to start in 2020.

The Rome Foundation also continues to provide support to researchers in the field of DGBIs. The Foundation hands out several Research awards to authors of the best paper, the highest cited paper and to postdoctoral researchers who submit the best research proposals for the Rome Foundation/AGA Research Grant. We also provide support to young investigators who are keen to start research in this area, but who lack support in their own environment. The Rome Foundation Research Mentorship selects submitted projects from emerging investigators who present their plans to a panel of experienced researchers, who provide feedback to improve study design, parameters, data collection and analysis for optimal feasibility and outcome.

The Rome Foundation has been the major contributor to the progress that has occurred relating to the acceptance, understanding and management of DGBIs. Our mission continues to take on a broader scope as our understanding of the different disorders and their global prevalence and impact continues to grow. Truly this is a time of rapidly expanding pathophysiological concepts and knowledge. I look forward to contributing to this process as president of the Rome Foundation, interacting with Douglas Drossman, Chief of Operations and Johannah Ruddy, Executive Director.

I hope you will follow and benefit from the activities of the Rome Foundation in 2019 and 2020.

Jan Tack
President, Rome Foundation
Leuven, October 2019



ROME FOUNDATION BOARD OF DIRECTORS

CURRENT

Jan Tack, MD, PhD
President
Leuven, Belgium

Laurie Keefer, PhD
New York, NY, USA

Douglas A. Drossman, MD
President Emeritus
Chief Operation Officer
Chapel Hill, NC, USA

John Kellow, MD, FRACP
New South Wales, Australia

Sam Nurko, MD, MPH
Boston, MA, USA

Giovanni Barbara, MD
Bologna Italy

Max Schmulson, MD
Mexico City, Mexico

Lin Chang, MD
Los Angeles, CA, USA

Magnus Simrén, MD, PhD
Gothenburg, Sweden

William Chey, MD
Ann Arbor, MI, USA

Ami Sperber, MD, MSPH
Beer-Sheeva, Israel

Xiucui Fang, MD
Beijing, China

FORMER

Fernando Azpiroz, MD, PhD
Barcelona, Spain
2008-2017

W. Grant Thompson, MD
Ottawa, Canada
1989-2008

Robin C. Spiller, MD, MSC
Nottingham, England
2000-2014

Michel Delvaux, MD, PhD
Nancy, France
1999-2006

Nicholas J. Talley, MD, PhD
Callaghan, Australia
1990-2011

William E. Whitehead, PhD
Chapel Hill, NC, USA
1992-2018

Enrico Corazziari, MD
Rome, Italy
1989-2010



PRESIDENT EMERITUS AND COO REPORT

Dear Rome Foundation Members, Friends and Sponsors,

Now that the reorganization of the leadership of the Rome Foundation has successfully occurred, I'd like to take this opportunity to explain this new organizational structure and report to you my activities in the new position of President Emeritus and Chief of Operations. Please see also the update on Jan Tack our new president.

ROME FOUNDATION ORGANIZATIONAL STRUCTURE

The process of reorganization began almost 4 years ago at a Rome Foundation retreat when the Board agreed that there needs to be a succession of the presidency which I had held for almost 30 years. Jan Tack was unanimously voted in as President and for the last few years he has gradually increased his responsibilities.

In addition, it was recognized that the foundation has grown to the degree that no one person can take on all the leadership aspects of the organization. Jan suggested, and I agreed that we create an overlapping dual leadership administrative structure as shown in Figure 1.

The tasks would include:

PRESIDENT, JAN TACK MD PHD.

- Manages the Rome Foundation Board of Directors
- Rome Foundation Research Institute (RFRI) Executive Committee
- Represents the Rome Foundation
- Senior Editor Rome V
- Financial approval
- Develops New Initiatives and Policies
 - Initiates and runs retreats
 - Set new directions for the Foundation
 - Establishes liaisons with other societies
 - Responsible for Long Range Planning

CHIEF OF OPERATIONS, DOUGLAS A. DROSSMAN MD

- Advisor to the President
- RFRI Executive Committee
- Represents the Rome Foundation
- Associate Editor Rome V
- Responsibility for US based Legal and fiscal responsibilities
- Operations
 - Communication program
 - Social Media/Marketing
 - Educational Programs
 - GI Genius

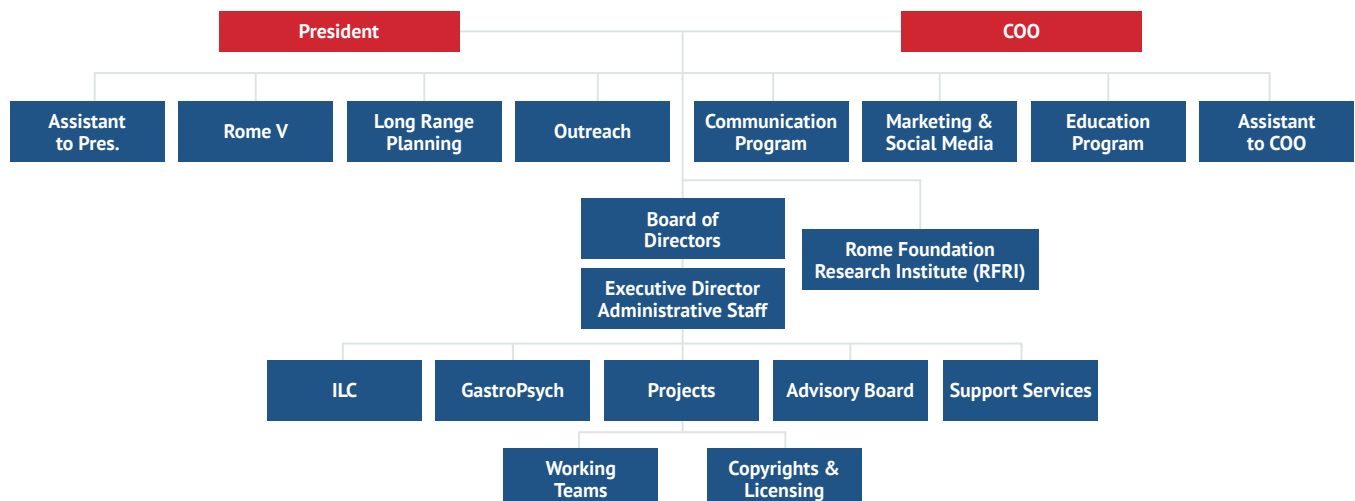


Figure 1

So, in effect as Jan takes on the direction for the organization and its administration, I will be responsible for the operations of many of our educational programs. In addition, we will both be on the Executive Committee of the new Rome Foundation Research Committee which is directed by Magnus Simren MD PhD. Below is an update on the activities under my responsibility.

Communications Skills Education Initiative

The Rome Foundation in collaboration with the Center for Education and Practice of Biopsychosocial Care, an entity that I have directed, has created a program to optimize the patient provider relationship through teaching clinicians effective communication skills. We know that particularly for DGBI, patients and their providers are becoming increasingly dissatisfied. Patients don't feel heard and clinicians are struggling to find the best way to engage with and treat their patients. The activities of this program are outlined on our website: <https://theromefoundation.org/programs-projects/rome-foundation-communication-program/>. They include six components, all of which are underway:

- 1. EDUCATIONAL VIDEOS.** This includes our advanced skills training program "Communication 202" <https://www.communication202.org/vsl25801840> now available in addition to a more basic video program ("Communication 101") where key opinion leaders discuss with patients treatment options including FODMAP diet, secretagogues, neuromodulators, behavioral treatments, etc. Stay tuned for its upcoming release.
- 2. EDUCATIONAL WORKSHOPS FOR FACULTIES AND TRAINEES AT MEDICAL CENTERS AND NATIONAL AND REGIONAL PROGRAMS.** We provide from several hours to a 1 ½ days guided learning of academic faculty and clinicians to improve their skills working with patients. This has been done at Johns Hopkins Medical Center, the ACG Regional Course, Columbia University and several more to come.
- 3. SYMPOSIA, SATELLITE SYMPOSIA AND WEBINARS.** For the past year or more we have created and participated in educational symposia

that focuses on communication skills with vendors such as PER, Haymarket, and Medscape. We are also highlighting workshops at our regional CME course for 2019-2020. <https://romedross.video/2GblGlq>

- 4. PEER REVIEWED PUBLICATIONS AND PUBLICATIONS GUIDELINES.** Johannah and I have recently published and have in press for 2020 articles on the patient provider relationship. Albenah Halpert has also produced similar articles recently. We have just initiated a Rome Foundation Working Team Report on Communication Skills to review the evidence and to make guidelines to teach ways to improve the patient provider relationship.
- 5. TRAIN THE TRAINERS.** Over the last few months we have held 3 Train the Trainer courses for key leaders in the field to learn how to facilitate small groups sessions, do role play sessions, and coordinate video learning programs in order to become faculty at future training programs. These certification sessions will be continued pending financial support.
- 6. VISITING SCHOLAR PRECEPTORSHIP PROGRAM.** For several years, gastroenterologists, trainees, psychologist and advanced practice providers have visited practices of Rome Board members to be precepted in DGBI and also learn communication skills. This is a very good way for researchers and clinicians to engage with key leaders and learn clinical and research skills at an advanced level. This program is critical in developing the next generation of providers in becoming skilled communicators and exceptional physicians managing patients with DGBI.

Social Media and Marketing

In collaboration with Nikki Shafer, Greg Fawcett, Jennifer Setzer of Precision Marketing, and Johannah Ruddy, and Mark Schmitter of the Rome Foundation we have expanded our social media activities to now include Facebook, Twitter and Instagram and membership has doubled in the last year. One of our highlights is the Facebook Live series where Johannah Ruddy and I do a video review of a variety of topics both for clinicians and

PRESIDENT EMERITUS AND COO REPORT CONTINUED...

patients on topical medical topics such as abdominal pain, dyssynergic defecation, functional heartburn and many more. Shortly, we will be setting up a series of monthly blogs by board members.

Educational Programs

The major educational event for us currently is our regional CME programs coordinated by Johannah Ruddy. This is available for all providers to cover the very latest on diagnosis and treatment of DGBI. Courses will be in Chicago later this month and also Los Angeles and Atlanta next year. The format is more interactive than most program with small group learning, videos, role plays and other valuable learning methods. See the feedback from this remarkable programs in the video at the bottom of this link: <https://theromefoundation.org/cme>.

We are also pleased to announce that for DDW next year the Rome Foundation – AGA Institute Lectureship will focus on the topic: CANNABINOIDS IN GI DISORDERS: A NEW UNDERSTANDING, USE AND ABUSE. The speakers will be: Keith A. Sharkey PhD who will speak on “The Endocannabinoid System and its mechanist role in nausea, vomiting and chronic abdominal pain” and Thangam Venkatesan MD who will speak on: “Beneficial and adverse effects of cannabinoids on Functional GI Disorders and Symptoms”. The session will be held on Monday May 4, 2020 from 2:00 – 3:30 PM in room E352 and McCormick Place Convention Center.

GI Genius

Formerly called the Rome IV Interactive Clinical Decision Toolkit it has now been renamed as it's easier to remember, and perhaps is deserving of that term! It has combined the educational elements of the diagnostic algorithms and MDCP with intelligent software to allow for clear decision making over time in the care of patients with DGBI. Recent updates include the addition of the pediatric modules headed by Sam Nurko, MD and his collaborators Carlo Di Lorenzo, Miguel Saps and Marc Benninga. We have also updated new

content and continue to do this every 6 months; in effect we have created a “living document” of new knowledge as it accumulates. Our recent additions include a more efficient way to handle psychosocial content such as using neuromodulators to treat painful disorders or to treat co-morbid anxiety and depression.

Rome Foundation PsychoGastroenterology Group

Headed by Laurie Keefer PhD and Sarah Kinsinger PhD the Psychogastroenterology group has grown in membership as well as activities. There are now four subcommittees on Membership (Laura Reigada and Helen Murray), Training and Education (Sarah Kinsinger and Megan Riehl), Social Media ((Tiffany Taft) and Early Career Group (Livia Guadagnoli). There are now close to 200 members and over 700 social media followers. The searchable online membership directory is underway with over 100 signed up to be accessed by clinicians looking to refer patients. Most notably the organization will be creating training programs for mental health providers to learn methods and techniques for treating patients with DGBI. Stay tuned for more information. For further information go to: <https://theromefoundation.org/working-teams-and-committees/rome-gi-psych-committee/>

Thanks so much for the opportunity to work with you as President and I look forward to continued activities in collaboration with Jan Tack and Johannah Ruddy in the future.

***Douglas A. Drossman MD
President Emeritus and
Chief of Operations
Rome Foundation.***



TIPS AND TECHNIQUES TO BETTER
MANAGE PATIENT CARE

AVAILABLE NOW!!

Order Online Now and Save \$30

With This Special Promotion

Use this special link or scan the
QR Code with your smartphone:

<http://bit.ly/2HGpFvT>



For Only \$119

(Normally \$149)

6 Video Learning Modules With Commentary

**A STEP-BY-STEP GUIDE FOR IMPROVING
PATIENT/PROVIDER COMMUNICATION**



Advanced techniques for optimizing the patient/provider relationship. Ideal for self- and small group learning.

Created by Douglas A. Drossman, MD, in collaboration with Rome Foundation and Drossman Center.

Included in this Curriculum:

6 video scenarios of effective and ineffective patient/physician visits with some of the most challenging patient scenarios you might encounter:

- Addressing drug-seeking behaviors
- Managing confrontational patients
- Uncovering hidden agendas
- Dealing with factitious illness
- Explaining the use of neuromodulators
- Improving patient satisfaction
- Increasing adherence to treatment
- Saving time through efficiency

Each video also includes a step-by-step critique of the ineffective and effective dialogues to more rapidly improve clinical learning.

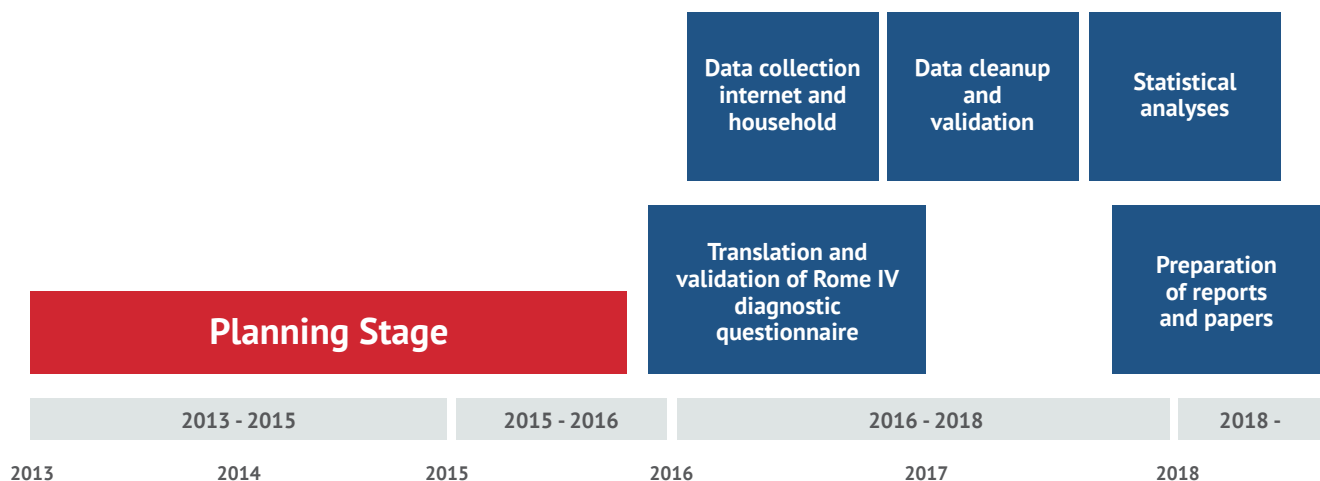


A Global Epidemiology Study of FGIDs

AMI D. SPERBER, MD, MSPH

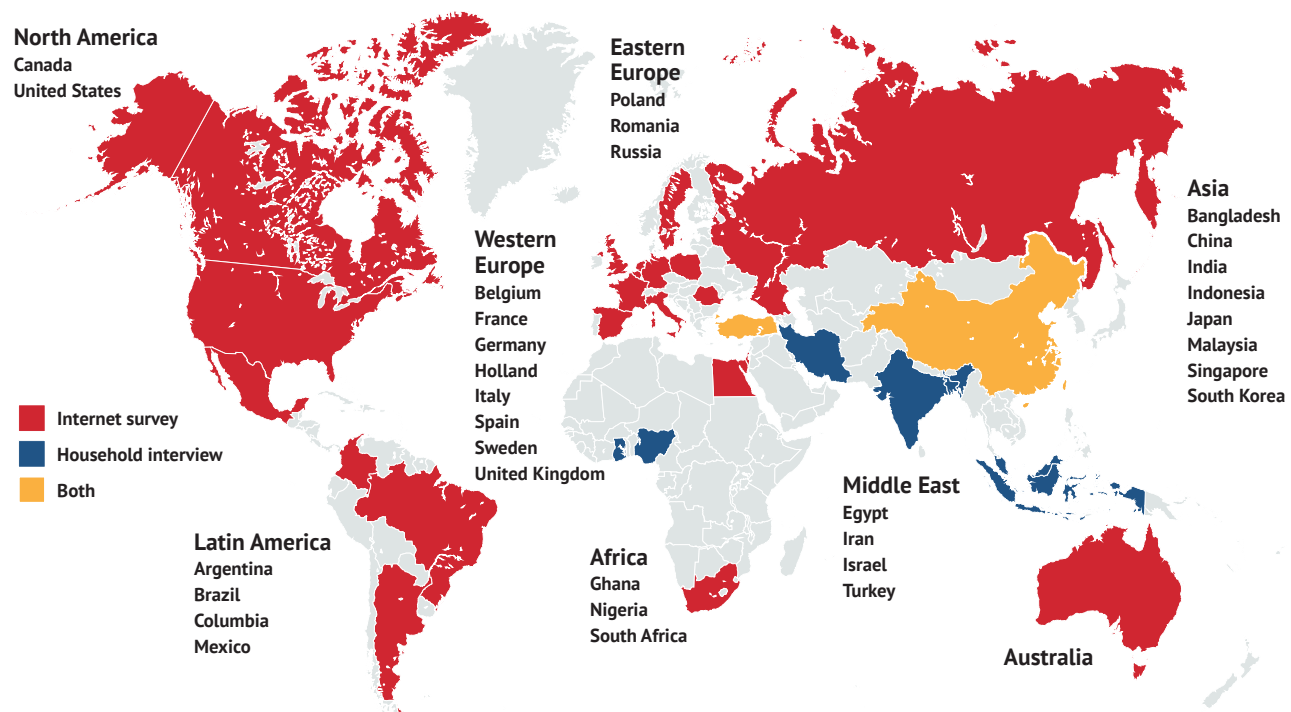
Based on previous research over the years, it is nearly impossible to attain a clear picture of the epidemiology of the functional gastrointestinal disorders (FGIDs), now recognized as disorders of gut-brain interactions (DGBIs). This is true, in particular, due to the heterogeneity of published studies where the results using different research methods are pooled together. This results in a wide variation of global prevalence rates that are extremely suspect. For example, with IBS, the most studied disorder, reported results range between 1.1% to 45%. Despite this huge range of findings, almost every paper on IBS begins with a statement that the global prevalence is between 8-15% or 10-20%. It is unclear what this determination is based on.

With the aim of further elucidating the epidemiology of these disorders, we undertook a rigorous study to evaluate the global prevalence and burden of FGIDs. The planning stage began in 2013 and continued for 3 years in anticipation of the release of the English version of the Rome IV diagnostic questionnaire. All other stages have been completed and the first paper is now under review for publication in the medical literature (Fig. 1).



In addition to Rome IV diagnostic criteria, the study's comprehensive questionnaire included demographic and co-morbidity factors, health behaviors, living conditions and other sociopsychological factors to determine the epidemiology and related aspects of 22 FGIDs in over 73,000 adults from 33 countries spanning a broad range of economic development and cultural-linguistic settings.

The study included 11 European, 4 Latin American, 3 African, 8 Asian, and 4 Middle East countries, and the US, Canada, and Australia (Fig. 2). In each country we recruited at least 2,000 respondents, with an equal gender distribution and a pre-planned age distribution, closely reflecting national populations.



Current focus and future plans

We are now focusing on putting into place the mechanisms related to exploiting this large database for future publications, data mining and new research initiatives, primarily in conjunction with newly established Rome Foundation Research Institute (RFRI). To this end we have developed and disseminated a protocol document on policy for data access, statistical analyses, and publications and created three permanent committees:

- Publication committee
- Database committee
- Statistical analysis committee
 - Statistical analysis core
 - Regional analyses cores

Our next major event is our Global Study Workshop for statisticians, was held in Barcelona at the end of the UEG Week, on October 23 and 24. Over 30 participants attended.

We anticipate the following outcomes from this study:

- A clearer picture of the global epidemiology of FGIDs, using uniform and appropriate cross-cultural research methodology.
- Enhanced understanding of FGID pathophysiology.
- Publication of the study results at the local, regional, and global levels.
- Validation of the new Rome IV diagnostic criteria
- Establishment and incorporation into the RFRI of a RF database with over 73,000 records from the global study with a potential for ongoing future data mining.
- Validated translations of the Rome IV adult diagnostic questionnaire into multiple languages approved by the RF for future research.
- Experienced networks of researchers from around the world who have gained rich experience in the conduct of multinational, cross-cultural research in the FGIDs.

Update on the Rome Foundation Research Institute (RFRI)

The Rome Foundation has created a research institute, RFRI, with the aim to create an international academic research institute that advances scientific understanding of the disorders of gut-brain interaction (DGBI). Through a process of growth and gradual increase in the number, scope, and types of projects, as well as the number of centers involved in the projects, the Rome Foundation wants to advance the Research Institute to become the global leader in DGBI research. The Rome Foundation believes the best opportunity for achieving these goals will be to actively collaborate with Industry, other academic non-Rome stakeholders and funding agencies.

During 2019, the RFRI activities have really taken off, with several projects running and / or in late planning phases. The RFRI now has one industrial sponsor, Ironwood, and we are in the process of planning several collaborative projects with other industry partners. There are also several RFRI projects that have started or will start within the coming months. The collection of data in the ambitious **Rome Global Epidemiology project** has been completed, and the current focus is on analyses of data, presentation of results at international meetings, and manuscript preparation. This project, headed by Ami Sperber, will result in numerous landmark papers regarding the epidemiology of DGBI. The DOMINO trial (Diet or medication in IBS in primary care) is a randomized controlled trial comparing the clinical efficacy of dietary advice with a spasmolytic drug in IBS in primary care in Belgium, and the recruitment is according to plan and will most likely be finished next year. This project, headed by Jan Tack, will provide important information about the clinical management of IBS, but there are also numerous parts in this project focusing on disease mechanisms in IBS, so the scientific output from this project will be both clinical and translational. Moreover, ROBOT, the ROME foundation research institute BiOmarker project, is in the

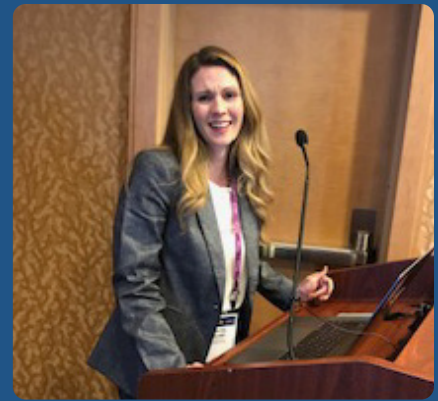
final planning phase and will start by the end of this year or early next year. This is an ambitious global multicenter project with the aim to develop a state-of-the-art biobank and database of patients with DGBI, supported by an international network of top international researcher sites. Patients in the database will be thoroughly characterized with regard to their clinical phenotype and associated demographic, medical history, psychosocial and lifestyle factors, their fecal, blood and urine samples will be collected and stored in a standardized fashion. This biosample and data collection will be uniform across all sites, and will enable evaluation of different biomarkers in large groups of very well-characterized individuals in different parts of the world and to assess their ability to be used as diagnostic and /or predictive tools. Our centralized electronic database will enable development of profiles of available clinical phenotypes and biosamples at any time to assess the feasibility of new studies. Exciting times lies ahead of us!

Please contact jruddy@theromefoundation.org if you would like to receive a copy of our 2019 Annual Report.



Magnus Simren, MD, PhD
Gothenberg, Sweden

Director, Rome Foundation Research Institute



Mentoring Program



To encourage young investigators to enter our field, we are continuing now with the Fourth Annual Rome Foundation Investigator Mentoring Program. Directed by Rome Foundation Board members Magnus Simren, Jan Tack and Xiucai Fang, MD and with the assistance of two experienced administrators Dianne Bach and Michael Stolar (formerly of the AGA), last year's program was highly successful with 3 presenters selected. Each year we will provide a venue for early stage investigators to obtain expert consultation on research that they are developing. The program is consistent with and supports the Foundation's commitment promoting science-based activities.

At the Mentoring meeting at DDW to be held at the Hyatt McCormick Center in Chicago on Saturday May 2nd 2020 from 3:30 – 5:45 PM, the awardees will present proposed research studies to experienced investigators (Foundation Board industry sponsors and others invited by the Foundation) who will review their proposals, identify pitfalls or opportunities and give advice on how to improve them. The presenters need to: (1) discuss functional GI disorders and/or GI motility problems as their area of investigation, and 2) are interested in pursuing a research career in the aforementioned proposal. Participants are selected via a competitive application process conducted by the Foundation. There is no age or level of training restriction and we encourage international applicants.

Each participant will have 20 minutes to present their proposal and to participate in the discussion about their proposal. To submit an application, visit our website at <https://theromefoundation.org/programs-projects/education-program/rome-foundation-mentorship-program/> For more information, please contact Michelle Berry at mberry@theromefoundation.org

Rome Foundation Around the World



Dr Drossman, Johannah Ruddy and her husband Bryan enjoyed seeing some of the famed sites in beautiful Istanbul while in Turkey to attend the WGO Conference in September, 2019.



Rome Staff celebrates new President, Dr. Jan Tack at DDW 2019



Administrative staff attend the annual Rome Foundation Holiday dinner in Raleigh, NC.



Members and their families celebrate completion of the 2019 Board of Directors December meeting in Costa Rica.

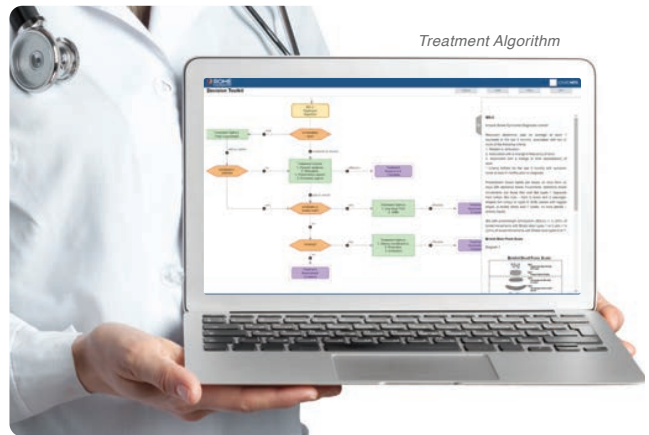


Gastroenterology faculty at Johns Hopkins Medical Center join co-facilitators Douglas Drossman and Johannah Ruddy to receive facilitator certification at the Train the Trainer Program in Baltimore MD.

NEW PSYCHOSOCIAL AND PEDIATRIC TREATMENT UPDATES IN GI GENIUS INTERACTIVE DECISION MAKING TOOLKIT

The Rome IV GI Genius Interactive Clinical Decision Toolkit has continued to be updated!

In addition to updates to the scientific content for the treatment of Functional Gastrointestinal Disorders, we have made updates to the clinical information, and treatment recommendations for adults. To support these changes, additional references have been included throughout the program to help improve the user experience of our program. Additionally, we have updated the psychosocial treatment and evaluation portion of the program and added new information on central neuromodulators to help our users best serve the needs of their patients in a comprehensive way.



Furthermore, the Rome Foundation is excited to reveal the Pediatric Diagnostic and Treatment algorithms in our interactive toolkit.

Working with Dr. Samuel Nurko and other pediatric GI experts, the Rome Foundation has just released new diagnostic and treatment algorithms for neonate/toddler and child adolescents. Each of these new diagnostic and treatment algorithms is complete with up-to-date scientific information supporting each clinical decision, with supporting references. With these new updates, the Rome Foundation hopes to continue to serve as the gold standard for the diagnosis and treatment for all patients with FGIDs.

Samual Nurko, MD, MPH
*Co-Chair, Pediatric
Committee*



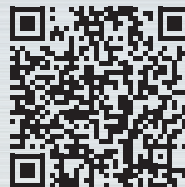
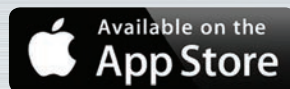
Rome App Now Available!

The Rome Foundation is happy to report that the Rome App is now available to download at no cost. This mobile application will allow users to interact with the Rome Foundation's educational resources in a new and convenient way. The application allows for direct availability of the adult and pediatric Rome IV criteria and is available for co-purchase along with access to the Rome IV Clinical Decision Toolkit.

Users will also have access to other features such as the annual DDW Overview and IBS: The Global Perspective. The Rome App will also provide users the ability to check out our social media (Twitter, Instagram, and Facebook), link to the Rome website, access information about all Rome board members, and connect with other Rome Foundation projects and products including books, slides, and online educational materials. The Rome IV diagnostic algorithms are also available to download a nominal cost. This App was developed in conjunction with our collaborators at Precisions Marketing Partners and is another step taken by the Rome Foundation to remain at the forefront of medical education for all clinicians treating FGIDs.



DOWNLOAD OUR FREE APP TODAY



*Improving the lives of people
with functional GI disorders*



GI Genius INTERACTIVE CLINICAL DECISION TOOLKIT

Also known as the Rome IV Interactive
Clinical Decision Toolkit

State-of-the-art educational tools
that can improve your assessment,
diagnosis, and treatment of
disorders of Gut-Brain Interaction
(Functional GI Disorders)



UPDATES FOR 2019 INCLUDE NEW MEDICATION INDICATIONS AND DIAGNOSTIC APPROACHES.

- Behavioral and central neuromodulator treatments to address associated anxiety and depression as well as pain that can affect the clinical condition
- Pediatric treatment algorithms added for neonate/toddlers and child/adolescents

STREAMLINE TREATMENT PLANS AND CLINICAL WORKFLOWS TO IMPROVE OUTCOMES FOR YOUR PATIENTS.

Interact visually with advanced diagnostic tools developed by the best minds in FGIDs. Identify clinical cases and all relevant decision pathways using touch inputs to highlight and activate optimal treatment pathways.

Developed by the Rome Foundation in collaboration with LogicNets, GI Genius addresses the sophistication and complexity of the diagnosis and treatment of FGIDs via an online resource that educates and assists clinicians in achieving optimal clinical outcomes. It combines on-demand interactivity with the content of the Rome IV Diagnostic Algorithms and the MDCP treatment guidelines.



Go to theromefoundation.org and click on **Products**

By using the Toolkit, practitioners learn by doing.

The program responds to input by the clinician and then interactively guides practitioners through optimal diagnostic and treatment pathways. The intelligent software also continues to learn. User input is retained and catalogued. Frequent updates will contain new information and learning to improve diagnostic and treatment pathways. Also, modifications can be made with user input to optimize the tool.

This program will aid practitioners around the world to successfully access Rome expertise, diagnose and treat patients, increase their own knowledge, and contribute to outcomes-based learning facilitated by this constantly learning system.

In addition to individual sales, site licensing will be available for universities and clinics so that your entire staff can have access to the Toolkit. Please contact us if you would like to talk with someone about bulk order pricing or custom licensing: mschmitter@theromefoundation.org

Improving the lives of people with functional GI disorders



ROME FOUNDATION EDUCATION PROGRAMS AND PRODUCTS CONTINUES TO GROW

The Rome Foundation provides all people who work in the field relating to Disorders of Gut Brain Interaction (DGBIs) with world-class educational programs and tools, all updated to reflect Rome IV recommendations. These give physicians and health care providers more confidence in their diagnoses and patients more satisfaction with their care, including improved clinical outcomes. For more information about the upcoming Rome Educational programs, please visit our website at www.theromefoundation.org.

EDUCATION COMMITTEE

The Rome Education Committee, chaired by Lin Chang, MD, was formed in December 2007 to oversee the development of educational programs and practical tools for physicians and health care providers in the field of Disorders of Gut-Brain Interaction (DGBI). For over a decade, the Education Committee has provided clinicians, researchers, and others in the DGBI field with resources and information that reflect the latest research, and incorporate diverse and innovative approaches to research, diagnosis, and treatment. Expansion of Educational Scope with Rome IV Books. With the publication of Rome IV in 2016 our educational efforts expanded to meet the needs of clinicians with a variety of new initiatives. This included Rome IV Diagnostic Algorithms for Functional GI Symptoms to help in the diagnostic evaluation, The Multidimensional Clinical Profile (MDCP) for functional GI Disorders to provide for more focused treatment options targeted to the individual patient, a Pediatric book, a Primary care book and a book containing all the diagnostic questionnaires and tables for investigators. Many of the educational initiatives that followed were based on using the knowledge in these publications.

ROME IV SLIDE SETS

The Rome Foundation has developed over 700 images and slides for Rome IV, and offers two additional sets for presentation: the Rome IV Multi-Dimensional Clinical Profile (MDCP) and the Rome IV Diagnostic Algorithms slide sets. Our slides include notes and references covering the information provided in the Rome IV book. Designed by the world's leading experts in functional GI disorders, these programs allow for self-learning and preparing presentations using the most up-to-date information. Purchase the entire slide set collection, specific modules by topic, or individual slides. They are available exclusively from the Rome Foundation website or at Rome OFundation Exhibit Booths at major conferences throughout the year.

Rome Foundation Regional CME Symposia for Nurse Practitioners, Physician Assistants & Primary Care Physicians The Rome Foundation has launched regional symposia aimed at providing both diagnostic and treatment education for clinicians on the most common brain-gut disorders. In 2017, Rome conducted a needs assessment among NPs and PA's and found a





Jan Tack, MD, Magnus Simren, MD, Douglas Drossman, MD, & Serhat Bor, MD after the Rome Symposium in Istanbul in September

gap in knowledge for both diagnosis and treatment of issues such as IBS, Functional Constipation, Functional Heartburn and Esophageal Disorders. Experts in the FGID field give didactic lectures on these topics. In addition, there are interactive workshops on patient-provider communication skills and a case-based session using the MDCP and interactive toolkit. In 2018-2019, we conducted four sessions in New Mexico, Texas, New York and South Carolina. These will continue with three other sessions through 2020 in Chicago, Los Angeles and Atlanta. Special thanks to Allergan, Ironwood and Salix for their educational grant support. For further insights into the value of these programs please see: <https://romedross.video/2GbJGlq>

ROME FOUNDATION VISITING SCHOLAR PROGRAM

The Rome Foundation Visiting Scholar Program provides select researchers and clinicals opportunities to observe leaders in the DGBI field. These programs bring fellows and junior faculty to Rome Foundation board members' institutions and allow them to observe their clinical approach and practices. During their visit, they are exposed to new research techniques and patient-focused care, and learn advanced communication skills to assist them in better managing their patients. They also meet with departmental heads and investigators for a broader understanding of the DGBI care environment. This program is critical to the development of the next generation of exceptional physicians managing and treating patients with DGBI.

GI GENIUS

The Rome Foundation in partnership with LogicNets®, the developer of an intelligent decision-support automation platform, produced the GI Genius, formerly known as the Rome IV Interactive Clinical Decision Toolkit. This new intelligent software system provides an online resource to assist practitioners in achieving optimal clinical outcomes. It offers a powerful online and interactive approach for accessing the combination of the Rome IV Diagnostic Algorithms and the MDCP treatment guidelines on-demand and at the point of care. In 2019, we added more information on the psychosocial aspects of patient care and the use of neuromodulators and behavioral interventions to help clinicians know when to consider centrally-targeted treatments. The GI Genius also includes Rome IV diagnostic and treatment recommendations for pediatricians and pediatric gastroenterologists to use as they treat DGBIs in pediatric populations. To learn more about the updates to the GI Genius go to: <https://romedross.video/2l2Xq9G>

COMMUNICATION 202 - NEW INNOVATIVE VIDEO LEARNING TOOL

This innovative video learning tool teaches the sophistication and complexity of the medical interview as a means to optimize the patient provider relationship. Within the context of a clinical visit, the program demonstrates educational techniques to improve communication skills, by employing simulations of ineffective and effective interview technique as well as detailed critique of the interview methods. This knowledge leads to patient centered care, effective psychosocial assessment, and shared decision making. For further information view the video at: <https://romedross.video/2ZozCCu>. To order go to: <https://www.communication202.org/vsl25801840>



Psychologist Jim Kantidakis PhD (far right) attending the Rome Foundation Visiting Scholar program at Drossman Gastroenterology in Durham, NC



Update from the International Foundation for Gastrointestinal Disorders (IFFGD)

When IFFGD was founded in 1991 by a patient struggling with the challenges of a chronic gastrointestinal (GI) disorder, resources and educational materials were nearly nonexistent. Over these past 28 years, IFFGD has substantially expanded resources, awareness, education and research of functional GI and motility disorders. Providing accessible information allows the GI patient community to actively and appropriately engage in their healthcare and treatment.

Our ability to provide for patients is possible thanks to continued collaborations with many organizations as well as patients and families. We are grateful to the Rome Foundation and their continued efforts on behalf of those affected by functional GI and motility disorders.

ADVOCACY UPDATE

For the first time in five years, IFFGD organized a National Advocacy Event on Capitol Hill. Patients, families, caregivers, and friends came together to advocate for all those suffering from functional gastrointestinal and motility disorders. This two-day event brought together advocates from across the nation. Our Advocacy Training Program on Monday had 60 participants who attended training sessions from IFFGD staff, medical professionals, patients, NICCIH, FDA and NIDDK staff. Tuesday was a successful day on Capitol Hill with 57 participants. Our collective voices reached 79 Congressional offices, representing 21 states.

Leading the fight for H.R. 3396, The Functional Gastrointestinal and Motility Disorder Research Enhancement Act, is one of the many ways IFFGD has helped to advance functional gastrointestinal and motility disorders patients' interests in the halls of Congress and with federal agencies. This legislation focuses on bolstering research and increasing awareness of functional GI and motility disorders and seeks increased coordination on research across the federal government. The goal of H.R. 3396 is to increase meaningful funding for medical research, provider education and public awareness. This important piece of legislation was reintroduced to the House floor by Representatives Jim Sensenbrenner (R-WI-5) and Gwen Moore (D-WI-4) on



Together this great team made the voice of the digestive health community heard and encouraged Congress to prioritize actions that will lead to greater awareness and the development of new treatment options and cures.

June 20th of this year. With our Advocacy Day occurring just four days later, it was an ideal opportunity to gain support within the House of Representatives. The Bill is starting off strong with eleven Cosponsors from eight states in these first three months. IFFGD President, Ceciel Rooker is continually discussing this legislation with Representatives on Capitol Hill and we anticipate more support as the congressional session progresses.

NEW PATIENT EDUCATION PROGRAM

We are excited to announce the launch a new program to honor the founders of IFFGD, the Nancy and Bill Norton Patient Education Series. With three events planned for each year, this series will equip patients with chronic gastrointestinal (GI) illness with education and resources to help them navigate life. Each meeting will be at least a half-day and will include a multitude of activities, such as lectures, Q&A panels, patient stories, lifestyle presentations, hands on workshops and networking opportunities. Programs will be held in various locations and will have an in-person program event as well as streamed online live content and recorded videos. The guidance and experience of our Patient Advisory Committee was instrumental in planning this new series. We are excited to provide another way IFFGD can continue to inform, assist, and support people affected by GI disorders.

PATIENT RESOURCES

Informational brochures, fact sheets, videos and a dietitian listing are among the many resources available to patients on IFFGD's websites. Over 300 articles are housed within our publication library online, covering many disease states and resources available. As research and technology are advancing, we plan to update the old and create many new fact sheets for patients. Please visit any of the IFFGD websites to learn more:

- IFFGD.org
- aboutIBS.org
- aboutGastroparesis.org
- aboutIncontinence.org
- aboutConstipation.org
- aboutGERD.org
- aboutgiMotility.org
- aboutKidsGI.org

Find Rome Speakers and Exhibit Booths at the Following Conferences in 2020



FNM 2020

March 25 - 28, 2020

Adelaide, Australia

4th Meeting of the Federation of
Neurogastroenterology & Motility



DDW 2020

May 2-5, 2020

Chicago, IL

Digestive Disease Week



IBS Days 2020

May 28-30, 2020

Bologna, Italy

New insights for a better management
of irritable bowel syndrome



APDW 2020

September 17-20, 2020

Kuala Lumpur, Malaysia

Asian Pacific Digestive Week 2020

ROME FOUNDATION BOARD OF DIRECTORS

FALL 2019



Jan Tack, MD, PhD
President
Leuven, Belgium



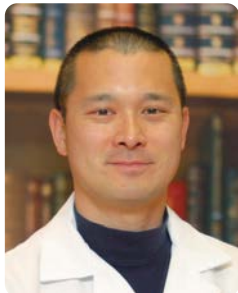
Douglas A. Drossman, MD
President Emeritus
Chief of Operations
Chapel Hill, NC, USA



Giovanni Barbara, MD
Bologna Italy



Lin Chang, MD
Los Angeles, CA, USA



William Chey, MD
Ann Arbor, MI, USA



Xiucui Fang, MD
Beijing, China



Laurie Keefer, PhD
New York, NY, USA



John Kellow, MD, FRACP
New South Wales, Australia



Sam Nurko, MD, MPH
Boston, MA, USA



Max Schmulson, MD
Mexico City, Mexico



Magnus Simrén, MD, PhD
Gothenburg, Sweden



Ami Sperber, MD, MSPH
Beer Sheva, Israel



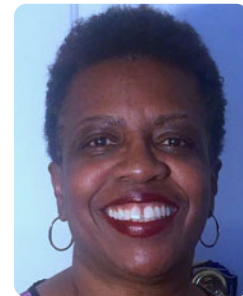
The Rome Foundation 2019 Board and Staff



Johannah Ruddy, M. Ed.
Executive Director
jruddy@theromefoundation.org



Mark Schmitter
Marketing Director
mschmitter@theromefoundation.org



Debra E. Wideman
Finance Director
dwideman@theromefoundation.org



Michelle Berry
Sales and Exhibit Coordinator
mberry@theromefoundation.org



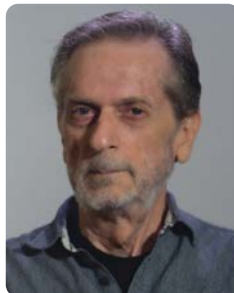
Claudia Rojas
Admin. & Latin America Coord.
crojas@theromefoundation.org



Jerry Schoendorf
Medical Illustrator



Eric Chapman
IT Director



Davis Stillson
Videographer



Iram Haq
Rome Research Institute,
Research Assistant

REGISTER EARLY AND SAVE \$60

Regular Price \$175, Early Bird Registration \$115 (\$60 off)*

*Register 60 days before each symposium to receive a \$60 discount

EARN UP TO 12 CE/CME CREDITS**



The Rome Foundation Symposium On Disorders of Gut-Brain Interaction (DGBI)

Sponsored by



Ironwood



Formerly known as Functional GI Disorders (FGIDs)

for Physician Assistants, Nurse Practitioners,
Primary Care Providers, and All Other Clinicians Treating DGBIs
such as IBS, Functional Constipation, Functional Heartburn, and more

A Rome Foundation Continuing Medical Education program

Chicago, IL

Oct. 5-6, 2019

Hilton Chicago O'Hare Airport

Los Angeles, CA

Feb. 8-9, 2020

Renaissance Los Angeles Airport Hotel

Atlanta, GA

June 13-14, 2020

Hilton Atlanta Airport

Learn to treat the most common gastrointestinal illnesses in your practice while earning valuable CE/CME credit. Attend our comprehensive symposium to discover new ways to treat your patients using the best, up-to-date knowledge, treatments, and lifestyle changes.

**SCAN THE QR CODE TO LEARN
MORE ABOUT THIS PROGRAM**



**SCAN THE QR CODE
TO REGISTER**



TOPICS COVERED INCLUDE:

- The burden of DGBIs on patients and their relation to other functional somatic syndromes
- Diagnostic and management strategies for primary care and gastroenterology practices
- Patient-centered approaches to care
- Biopsychosocial perspectives on DGBIs' diagnosis, communication, and clinical care
- A comprehensive list of the Rome IV DGBIs and their diagnostic criteria

**TO REGISTER & LEARN MORE, GO TO:
www.theromefoundation.org/cme**

Rome Copyright & Licensing of Research Instruments

The Rome Foundation has provided validated research questionnaires for licensing. However, recently the list of instruments available has expanded significantly. See Table for current instruments. We continue to acquire more and more Instruments for copyrights, translations and localizations of the various questionnaires for international research use. Due to the growing complexity of managing this licensing and distributino, the Rome Foundation formed a Copyright and Licensing Committee to organize the questionnaire offerings and streamline the licensing process. Substantial enhancements have already been made. Mark Schmitter, our marketing manager is the go to person to contact with questionnaires on licensing of these instruments. The committee members include Ami Sperber and Douglas Drossman as co-chairs, Olafur Palsson as chief of operations, and Iram Haq, as administrator.

Among the most commonly requested questionnaires for licensing include the Rome IV diagnostic questionnaires for adults and children, the Bristol Stool Form Scale, the IBS Severity Scale Score (IBS-SSS), and the IBS-QOL. We now cover the vast majority of questionnaires used in DGBI research as well as for IBD, celiac disease aqnd others. Most all of the questionnaires have been developed for research by Rome Foundation members. These instruments are in stock in a wide variety of language and country adaptations. For example, the Bristol Stool Form Scale can now be obtained from the Rome Foundation in over 95 different translations and country adaptations. If you are a researcher, academician, clinician or student looking for validated research questionnaires in the functional GI area, your first stop should be the Rome copyright and licensing page, where you will see on our newly revised web form a list of the questionnaires you can get, and where you can directly request exactly what you need: www.theromefoundation.org/products/copyright-and-licensing/.

Licensing questionnaires from the Rome Foundation will require a licensing fee if you have funding for your project (for example, if you need the instruments for a

grant-funded research study or for commercial purposes). If you have no such funding, there is no fee for use of the questionnaires except a standard processing fee. Note, however, that you must have a license in order to use any and all of the questionnaires that the Rome Foundation offers, even if you are only going to use them in an unfunded project. We hope that you will take advantage of our ever-expanding resource of the Rome Foundation's questionnaire collection, and we strive to make the process of obtaining these instruments as efficient and helpful as possible. We look forward to hearing from you and helping you with your questionnaire needs!

ROME FOUNDATION LICENSING OF RESEARCH INSTRUMENTS*

- Rome IV Adult and Pediatric Diagnostic Questionnaires
- IBS Quality of Life (IBS-QOL)
- IBS Severity Scale (IBS-SSS)
- Bristol Stool Form Scale, Adult and Pediatric (BSFS)
- IBS Global Improvement Scale (GIS)
- Satisfaction with Care (SAT 37)
- Functional Bowel Disorder Severity Index (FBDSI)
- Trauma Questionnaire (TC)
- Physician–Patient Relationship Scale (Patient and physician versions)
- Comorbid Medical Conditions Questionnaire (CMCQ)
- IBD Scales: UC/CD Health Status Scales, RFIPC
- Celiac Disease QOL (CD-QOL)

* Available in dozens of languages



Olafur Palsson, PsyD
*Operational Director of the
Licensing Committee*



Iram Haq, MPH
*Research Coordinator for
RFRI and the Administrator
of the Committee*

A special thank you to our sponsors



Improving the lives of people with
functional GI disorders



Rome Foundation, Inc.
14460 Falls of Neuse Rd | Suite 149-116 | Raleigh, NC 27614

THEROMEFOUNDATION.ORG